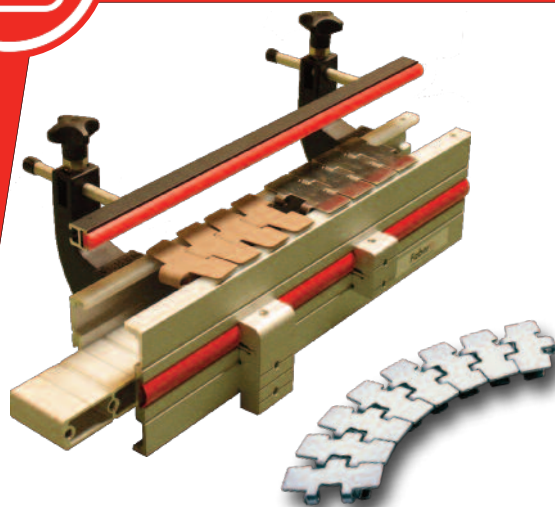
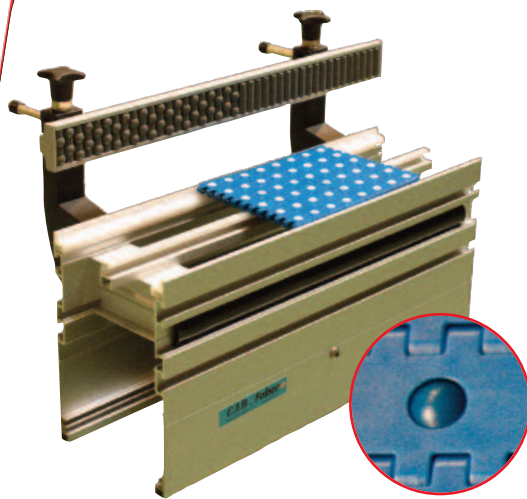
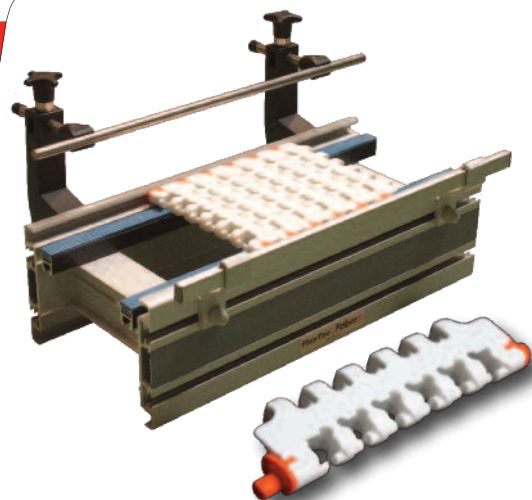
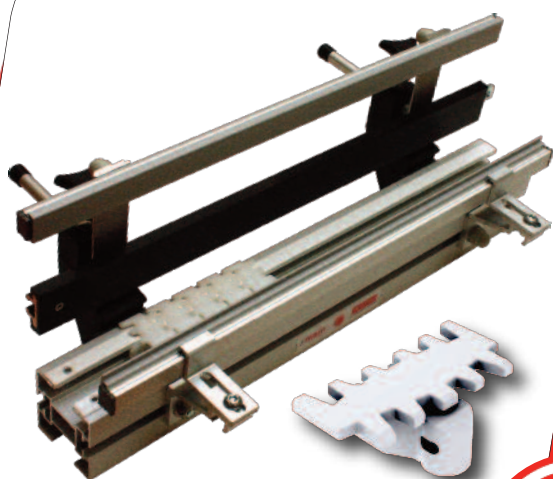


# MODULAR CONVEYORS

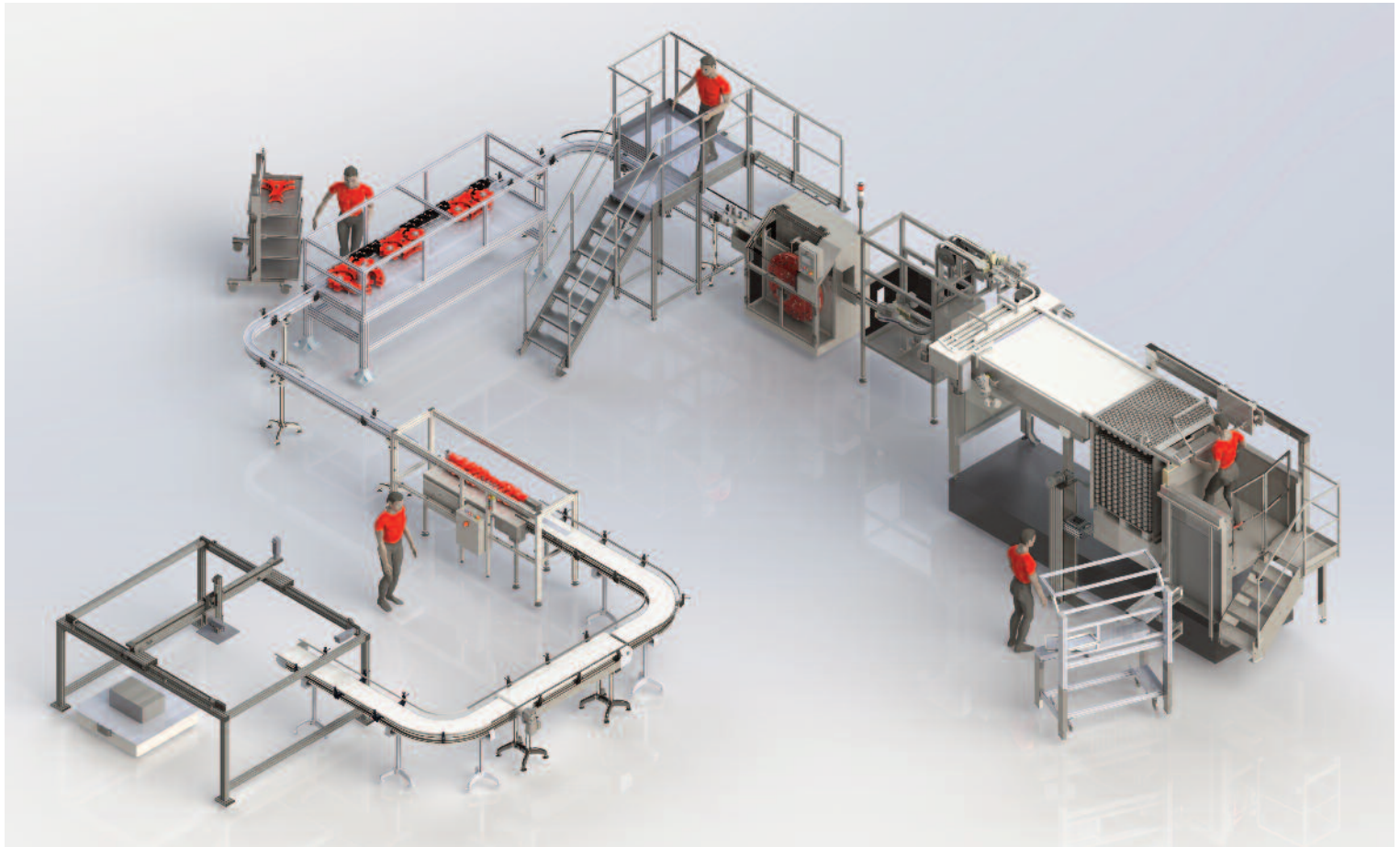


/ **FABER**

**hellomoov**

one move ahead

# Shared design work



*Design of lines in 3D.*

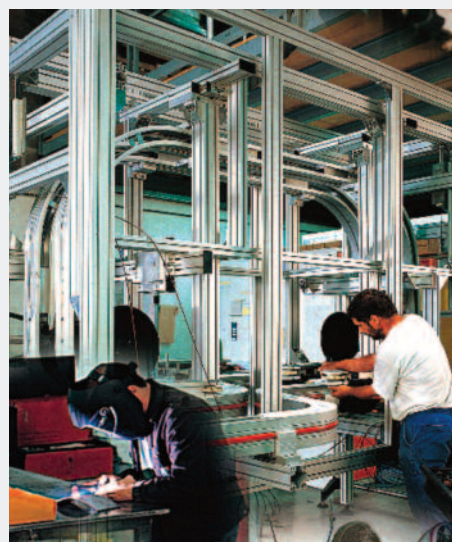


**M**ore than 30 years  
experience in modular  
conveyors.  
**FABER** takes over  
your transport projects  
as soon as you express  
the need.

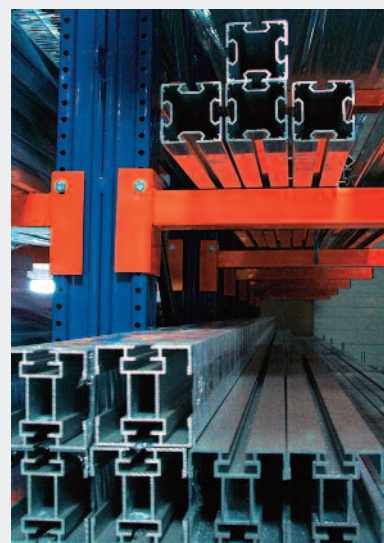
- Based on our standard ranges,  
we propose kinematics adapted to your needs.
- A network of sales engineers in your area ready to  
meet you.
- Technical recommendations.
- 2D/3D libraries available to your design office.
- A large stock area
- Reactivity and short delivery lead times
- A continuous quest for innovation  
(performance, functions, ergonomics, development  
of new ranges).
- Delivered ready to assemble or fully assembled  
conveyors.



*Curve production by digital bending*



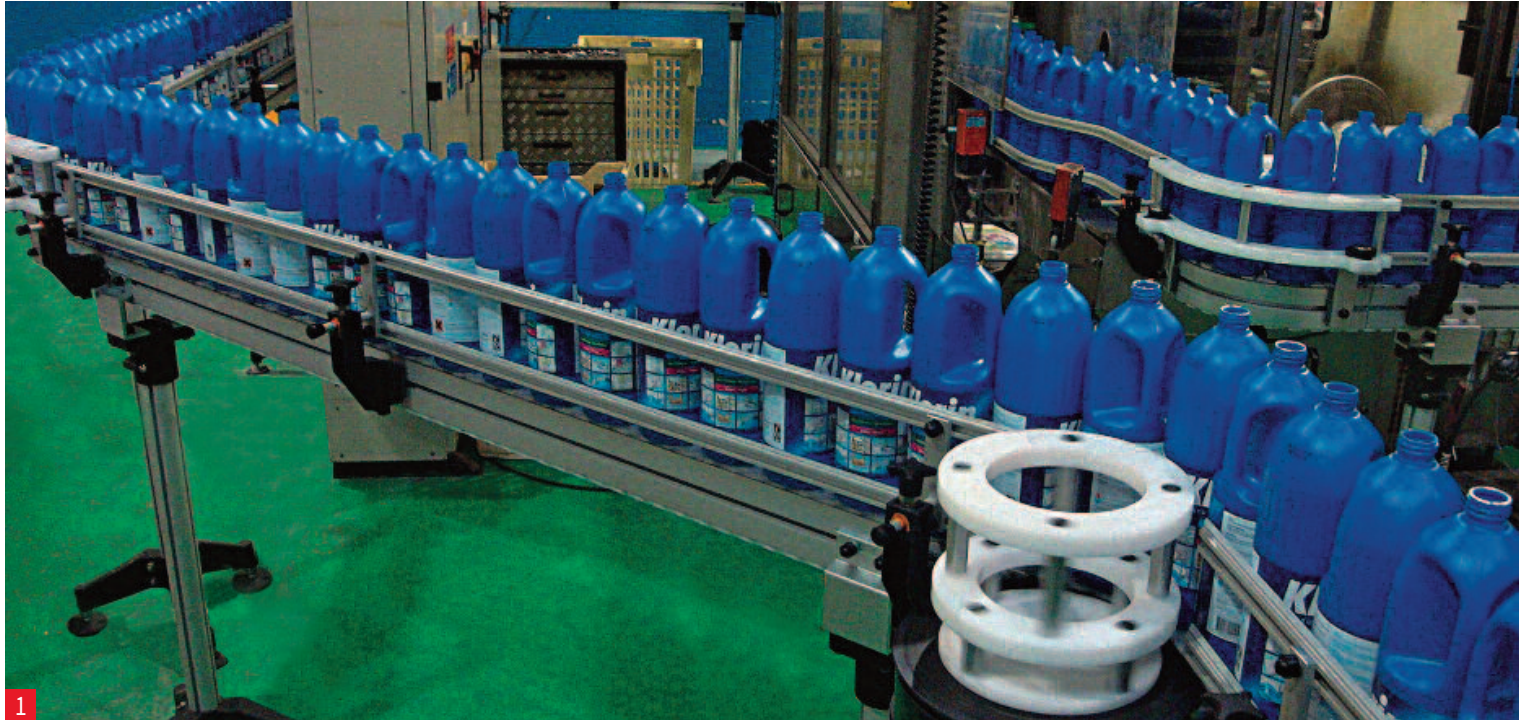
*Integral finishing and assembly shops*



*40 tonnes of aluminium profile,  
thousands of components in stock.*



# FlexMove 45 to 300 mm width



- 1 Chemistry: cans of cleaning products.
- 2 Food: filmed trays.
- 3 Cosmetics: product conveyors, buckets, pinching.
- 4 Bottling: guidance by Rotobloc® tools.
- 5 Petfood: metal cans.
- 6 Cheese : cardboard boxes.
- 7 Pharmacy: single-dose.
- 8 Cosmetics: box lifters.
- 9 Standard chains, flocked, with inserts, cleats, rollers.





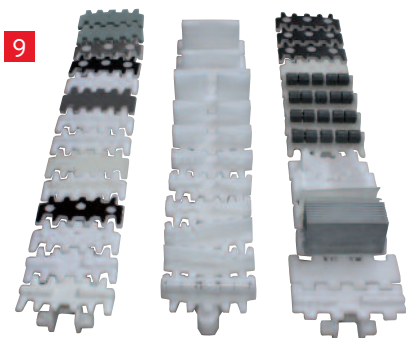
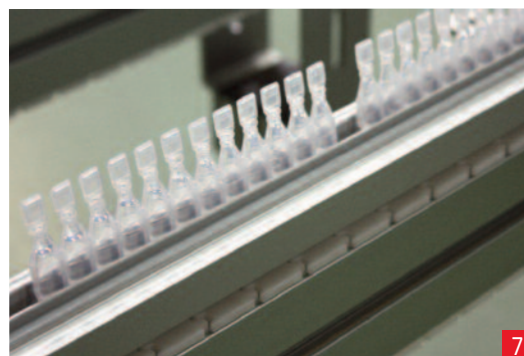
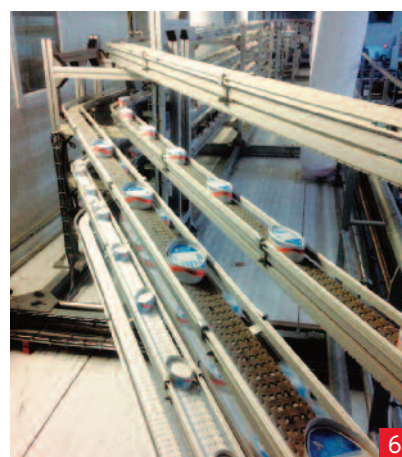
# A standard and cost effective system, suitable for transportation of individual loads.

FlexMove® conveyors can fit to any type of location.

We offer ready-made modules to be assembled or fully assembled conveyors all tested in our workshops.

Accessories (feet, guides, supports,...) are standard to all our ranges.

- Compatible structures and chains and can be connected with thousands of of conveyors in service.
- Implementation, transformation or simple and fast evolution.
- Small bending radii.
- Low noise level.
- Motorized transfers, cable trays, control boxes, variable speed.
- About a hundred types of chains for your specific needs.
- 8 widths available: 45, 65, 85, 85, 105, 155, 182, 300 mm.





# FlexToo® 227 to 647 mm width



1 Cheese : cardboard trays.

2 Logistics: boxes.

3 Biscuit factory: connecting conveyor (product wider than the conveyor).

4 Food: pasta bags.

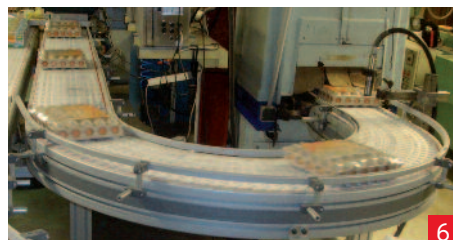
5 Injection: plastic containers.

6 Food: egg trays (180° curve).

7 Pharmacy: boxes of blisters.

8 Food: filmed packs.

9 Housekeeping products.







# A robust and little noisy system for conveying boxes and voluminous products.

Designed according to your requirements , our FlexToo® conveyors are built and tested in our factories.

Many accessories (feet, guides, supports,...) are available for all our ranges.

- Very robust curved belt allowing multi-curve geometries.
- Bending radii allowing very compact designs
- Particularly low-noise functioning.
- Optimum safety for the workforce.
- Motorized transfers, cable trays, control boxes, variable speed.
- Conveyor designed for quick and easy maintenance.
- Integrated cable trays.
- Strong structure.
- Modularity to facilitate the upgrading of lines.
- 5 widths: 227, 342, 418, 494, 647 mm.



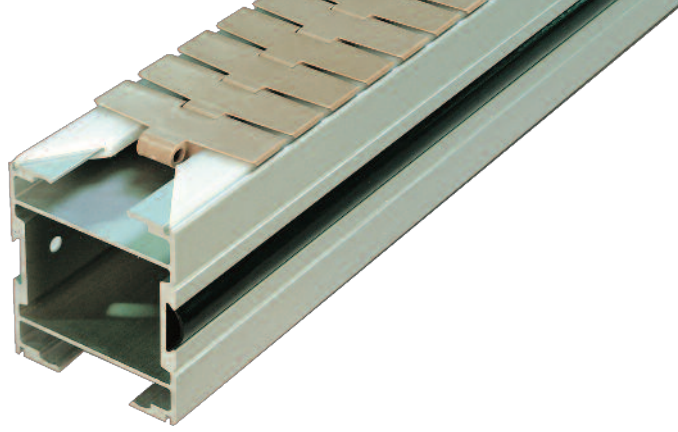


# Robur 70 to 196 mm width



- 1 Motor oil cans
- 2 Porcelain parts before firing.
- 3 Parts in the mechanical industry.
- 4-5 Automotive industry
- 6 Phyto-sanitary products

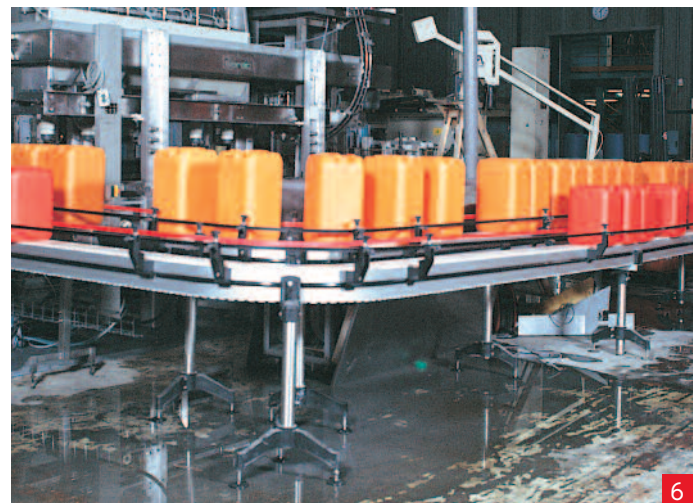
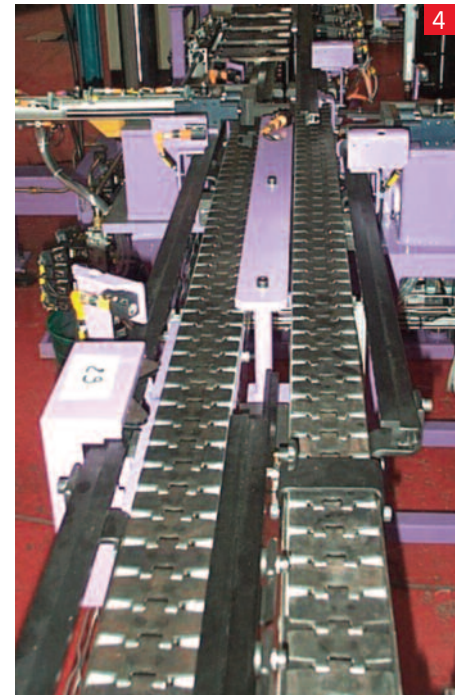




**O**ur best solution  
for heavy duty ambients :  
dust, oils, flow of liquid products, chips,  
metal parts, heavy parts, abrasives, sawdust,  
sugar, cocoa...

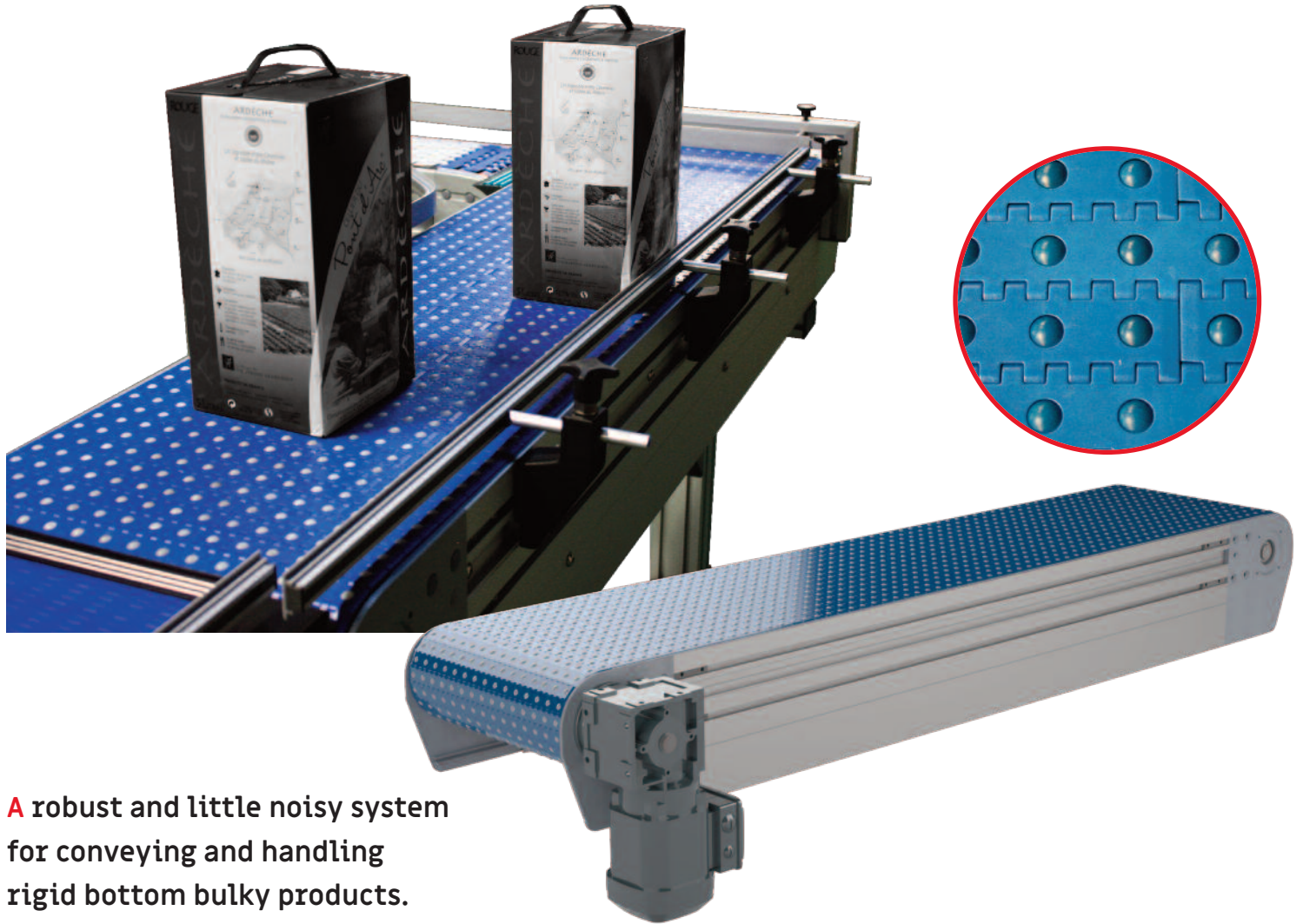
**30 YEARS  
EXPERIENCE**

- Robust
- Open or monobloc structure
- Unitary or packed products
- Widths 70, 86, 118, 196 mm
- plastic and metal chains,  
straight and curved





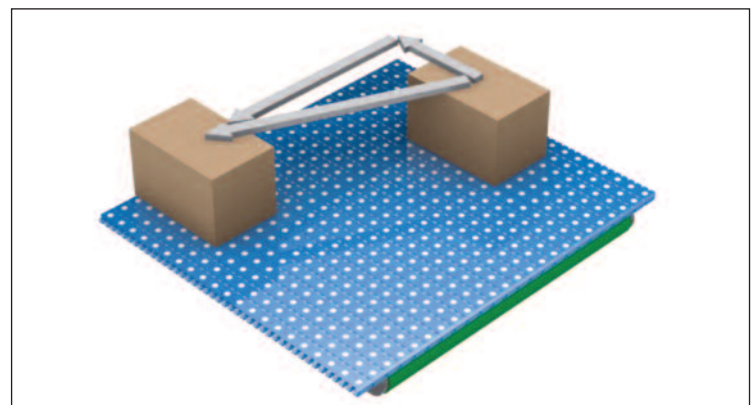
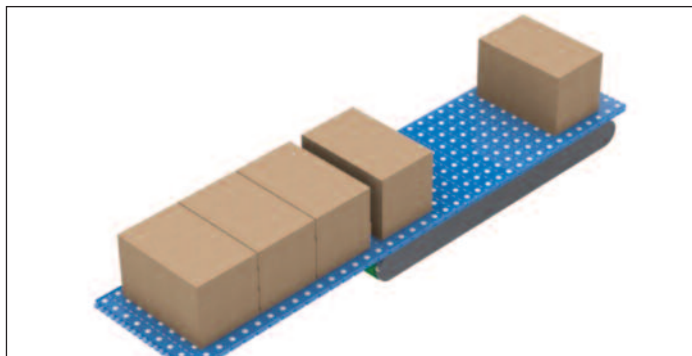
# CAB : multi-directional ball conveyor



**A robust and little noisy system for conveying and handling rigid bottom bulky products.**

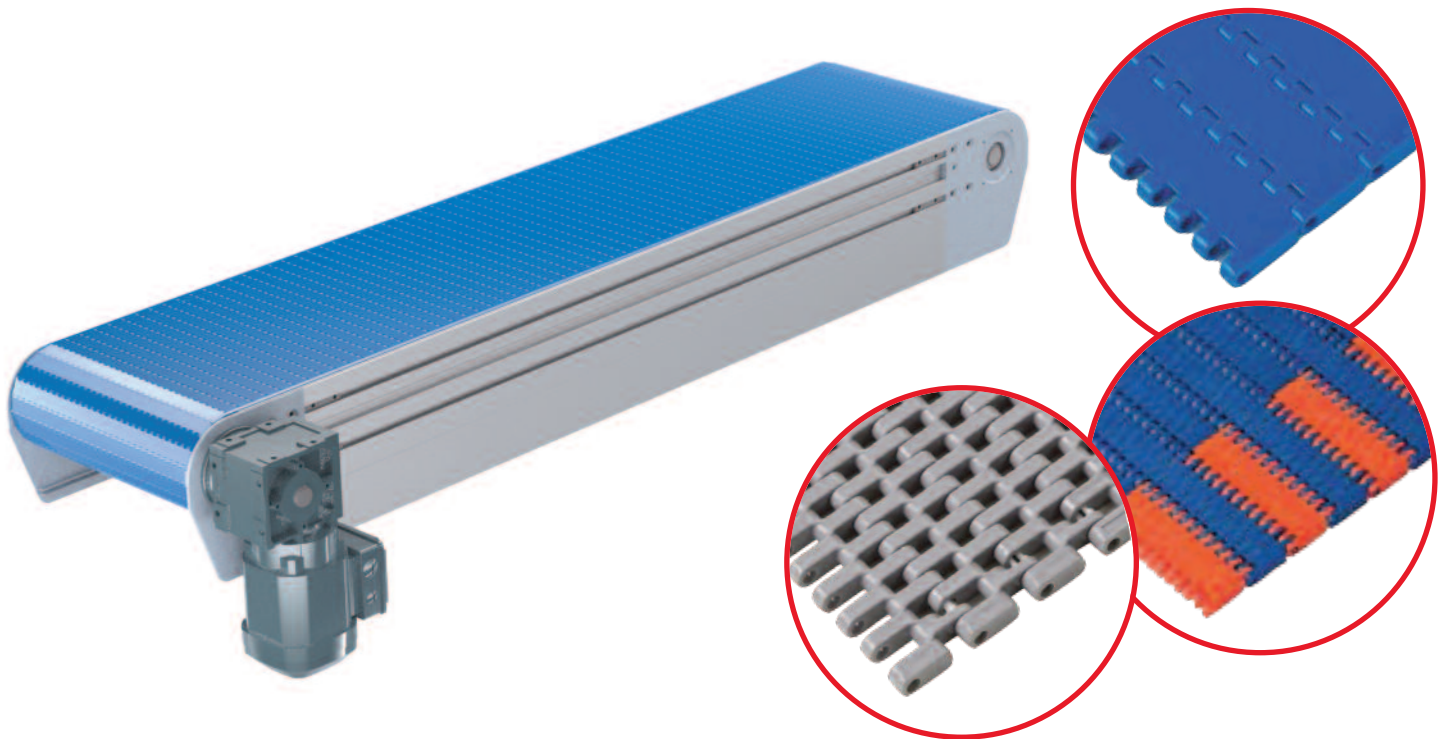
## Local variation of the conveying speed

- Creating a step between products
- Decrease step between products
- Product stop on a running conveyor
- Reverse movement of the product direction.
- Side movement
- Reference setting on fixed edge
- 90° transfer
- Ejection of non-compliant products.



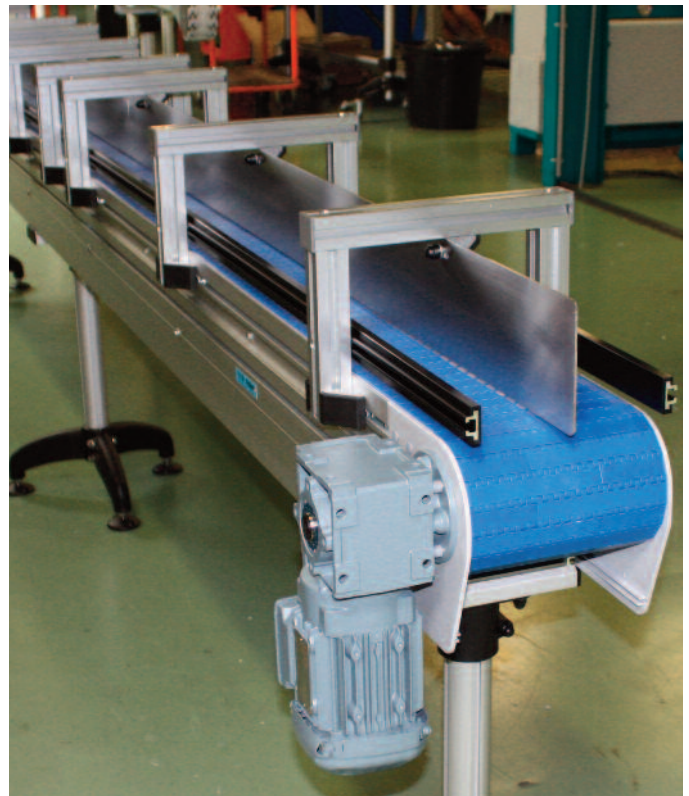


# CAB-SB : Straight conveyor



**A robust and little noisy system for conveying of cardboard boxes & bulky products.**

- CAB-SB is available in several widths: 165 mm, 242 mm, 318 mm, 394 mm, 470 mm, 546 mm, 623 mm (on request)
- Modularity.
- Robust structure,
- Low noise.
- Optimum safety for operators.
- Low grip, open or closed belts, 25.4 mm pitch
- Easy and quick maintenance.





# hellomoov

one move ahead

## / 1 OFFER, 3 EXPERTS

50 years experience forged with customers from our 3 sister companies, in a wide range of manufacturing fields, allowing a large variety of products to move on production lines.

Our offer of standard modules, sized to measure solutions, and standard equipments that we bring today on the market is truly unique by its depth and perfectmix and match features.

## / COMPLETE, MODULAR, CREATIVE AND RELIABLE



Our long time established **expertise on modular conveyors and transfers.**



Our wide and deep profiles range offering high quality **assembled solutions** perfectly meeting your demands.



Our unique capacity to develop and supply **function plastic parts and screws.**



Our creativity to provide longlasting and efficient **solutions.**

## / ALLOWING PRODUCTS TO MOVE ON PRODUCTION LINES TODAY AND TOMORROW

**Our ambition is to give you one move beyond.**

By building together **innovations** that will make your production lines processes more fluid, that will enhance your manufacturing environment **aesthetic & creativity** to fuel **your teams motivation and efficiency.**

## FABER

Zone industrielle - rue Henri Dunant  
FR-08140 Bazeilles  
Tél. : +33 (0)3 24 27 03 29  
E-mail : [info@faber.fr](mailto:info@faber.fr)  
[www.convoyeurs.com](http://www.convoyeurs.com)



Join the  
moove

[hello@hellomoov.com](mailto:hello@hellomoov.com)  
**hellomoov.com**